



FELTHAM CONSTRUCTION

A COLLECTION OF OUR EDUCATIONAL PROJECTS



FELTHAM CONSTRUCTION

Feltham Construction was founded in 1972 on the key principle of providing first-class customer service and satisfaction. It has since built itself an impressive reputation for delivering high-quality projects across the southern counties.

Throughout the years, this privately-owned construction company has drawn on the expert knowledge and experience of its staff to grow and expand into new industry sectors, including commercial, education, residential, leisure, healthcare and retail.

Now a well-respected, regional construction company with a £50 million-pound turnover, the company remains located in Newbury in its own offices aptly named Feltham House. The company boasts a wealth of major clients, including several regional Housing Associations, Local Authorities and Independent Schools and continues to pride itself on its significant amount of repeat business.

The company's success is built on its belief in quality work, attention to detail, on-time completion, strong working partnerships and the recruitment of top-level staff.

EDUCATION

Due to our extensive experience within the educational sector our delivery teams have gained knowledge and skills to work in such environments. The education sector provides 60% of Feltham's annual turnover, projects typically range from £250,000 to £10M. Feltham Construction have completed numerous projects within live, private and state schools as well as delivering works within education facilities for children and young adults with special needs or complex learning difficulties. Feltham possess a versatile portfolio of projects including sport halls, boarding houses, sixth form blocks, lecturer theatres and pavilions.

OUR CLIENTS

- 🎓 RADLEY COLLEGE
- 🎓 ETON COLLEGE
- 🎓 QUEEN ANNE'S SCHOOL
- 🎓 HAMPSHIRE COUNTY COUNCIL
- 🎓 UNIVERSITY OF READING
- 🎓 ST EDWARD'S SCHOOL
- 🎓 WESTGATE SCHOOL
- 🎓 WEST BERKSHIRE COUNCIL
- 🎓 ST SWITHUNS SCHOOL



FELTHAM
CONSTRUCTION

📍 42 London Road, Newbury, RG14 1LA

✉ info@felthamconstruction.co.uk

☎ 01635 277 100

🌐 www.felthamconstruction.co.uk

Building *on* Excellence since 1972

EDUCATION | RADLEY COLLEGE



RADLEY COLLEGE | CLOCKTOWER SQUARE



Radley College is a mainstream, independently funded senior school for boys aged 13-18 years old in Abingdon, Oxfordshire. Established in 1847 by the Rev. William Sewell, it now accommodates up to 684 boys.

Feltham Construction have been working with Radley College in excess of 10 years and completed over 10 projects with them to date.

The **CLOCKTOWER SQUARE** development comprised of the construction of a 2-storey teaching block providing 10 additional classrooms, an art gallery, double height forum space and cafe area together with a link. Refurbishment works also took place in the existing buildings to provide additional WC areas, a shop & art library. External works consisted of new entrance steps and ramps together with soft landscaping.

Furthermore, another project Feltham worked on was Radley's **SCIENCE BLOCK**. This included the alteration, refurbishment and extension of the existing Science Building and construction of new laboratories, a lecture theatre and a rooftop observatory. Works also included mechanical and electrical alterations and installations as well as hard and soft landscaping.

Feltham Construction have completed the design and construction of 11 **BOARDING HOUSES** to date, including their Park Cottages.

RADLEY COLLEGE | SCIENCE BLOCK



RADLEY COLLEGE | BOARDING HOUSES



I would like to say a huge thank you for the wonderful refurbishment that has taken place over Easter. All of the rooms are looking fabulous and the boys and parents reactions were very positive when they returned to College. The workmen were exceptionally courteous and considerate whilst working very long hours to get the job finished on time.

L Social, our most recent student accommodation project with Radley College.

ETON COLLEGE | BEKYNTON FIELD PROJECT



Recognised as one of Britain's most prestigious public schools, Eton College was founded in 1440 by King Henry VI. It is an all-boys boarding school and educates around 1300 pupils each year. It is located in Eton, Berkshire near Windsor.

The **BEKYNTON FIELD PROJECT** was designed to include the construction of new buildings to form a new quadrangle off of South Meadow Lane. These buildings would create teaching spaces for Modern Languages, Economics, Politics, Divinity as well as a 300-seat lecture theatre and exhibition gallery. The buildings were designed and built in a classic style to mirror and maintain the street frontage of the campus.

More recently, Feltham worked on the construction of the **WILLOWBROOK SPORTS PAVILION** to replace the existing tennis pavilion. It provides two new sets of changing facilities as well as a large internal clubhouse area. The use of floor to ceiling corner glazing and retractable screens allows the building to open up fully to the elements when in use. When not in use the building can be fully closed up providing security and privacy.

ETON COLLEGE | WILLOWBROOK SPORTS PAVILLION



QUEEN ANNE'S SCHOOL | SIXTH FORM CENTRE



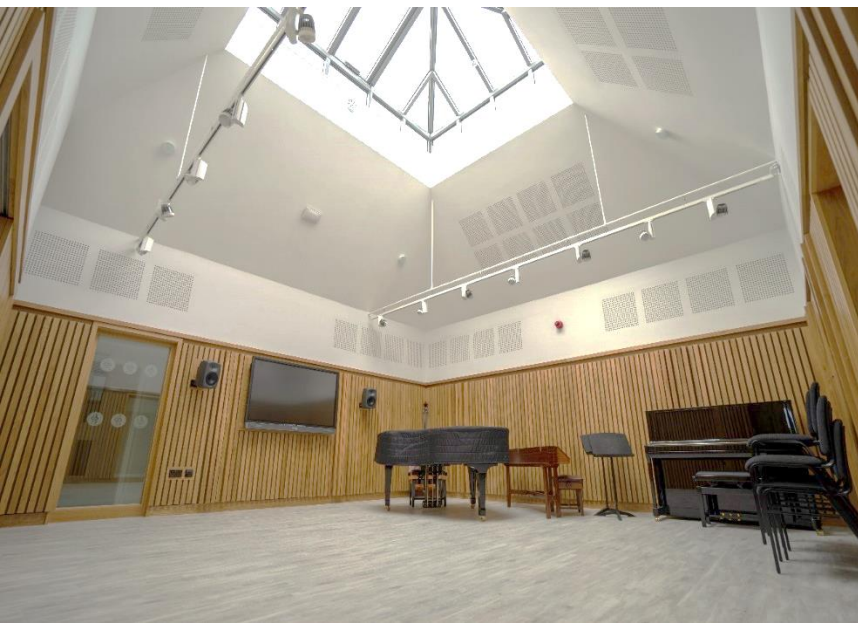
Queen Anne's School is a mainstream, independently funded senior school for girls aged 11-18 years old in Reading, Berkshire.

We built a state-of-the-art 2-storey **SIXTH FORM CENTRE** to provide students and staff with new catering and dining facilities, offices as well as additional social and teaching rooms. The site was live throughout the entire duration of works.

Additional projects we have completed for Queen Anne's School were **MADDOCK** and **HOLMES BOARDING HOUSES** as well as **THE SCOTT MUSIC CENTRE** and **NEW ENTRANCE & RECITAL ROOM**. The works on the music centre project is to provide a new Main School Entrance, Music Centre and Performance space. The stripping out of fixtures, fittings, finishes of the previous School kitchens and Refectory areas. Isolation of existing services, refurbishment and renovation of spaces to provide a new Music Centre comprising offices, practice rooms and recital area including re-roofing and new roof light.

“It's a shame you don't have 'excellent' as a category, as many of your scores would have said this. The performance in particular of Mick Hewer as Site Manager and Andy Gray as Contracts Manager, together with Geoff Neville as Managing Surveyor was excellent – no issues on communication, timeliness, attention to detail or anything else. We would happily re-engage them on another suitable project.”

QUEEN ANNE'S SCHOOL | THE SCOTT'S MUSIC CENTRE



QUEEN ANNE'S SCHOOL | NEW ENTRANCE HALL



QUEEN ANNE'S SCHOOL | BOARDING HOUSES



HEATHERSIDE JUNIOR SCHOOL | FLEET



In the 1960s there was high demand for new school buildings. The buildings required needed to be affordable and quick to build. SCOLA buildings were introduced to meet this requirement as they could be designed and built simultaneously. However, with poor insulation and over glazing they now provide uncomfortable learning environments and have a high energy consumption.

With the buildings remaining structurally sound, Hampshire County Council created a wider programme to re-clad all the SCOLA system properties. The new cladding system has been designed to meet modern building standards, be durable and low maintenance whilst providing an improved educational learning environment. Feltham were awarded the first scheme at **HEATHERSIDE JUNIOR SCHOOL** consisting of the re-cladding of the main school block and smaller 4 classroom additional block to the rear of the school. Following on the success Feltham were granted the **YATELY SCHOOL** cladding project that was carried out over three phases with a live school environment throughout. As well as the complete external re-cladding and re-roofing, the internal refurbishment also included mechanical and electrical works, asbestos removal and the renovation of three science laboratories. Lastly, **MERTON INFANT SCHOOL** was the final school in the SCOLA scheme that consisted of partial re-cladding with additional internal works and re-roofing of the main roof areas.

The **WARBLINGTON SCHOOL** project comprised of the construction of a new kitchen, re-roofing of the Gym/Dance Studio and the recladding of the Hall, Gym and Dance Studio.

YATELY SCHOOL | HAMPSHIRE



MERTON INFANT SCHOOL | BASINGSTOKE



WARBLINGTON SCHOOL | HAVANT



UoR | BULMERSHE PAVILION



Feltham has completed numerous projects for the University of Reading. Including the construction of 2 pavilions named the **BULMERSHE & WHITEKNIGHT'S PAVILION**. These involved the construction of a single storey sports pavilion as well as the widening, re-surfacing and extension of the car park. The creation of a drainage ditch and pond for the collection and management of surface water was also constructed for Bulmershe and the creation of a fire tender access route and minor hardstanding and landscaping works, was built for Whiteknights.

Feltham also worked on the **BIOSCIENCE LABATORY**. This involved the strip out of the existing mechanical and electrical services and installation of new M&E services to accommodate the relocation of food processing equipment within the new food preparation area.

Finally, the **LIBRARY** scheme comprised of initial demolition of partitions and strip out of the 5th Floor. Followed by the construction of new partitions to form toilets and rooms. Complete internal refit to include new engineering services, finishes and fittings and re-fixing external 5th floor cladding panels. Stripping out the reading room section of the 2nd floor. Installing new or extended engineering services, finishes and fittings. Alterations to the perimeter of the rest of the 2nd floor to create student work positions, to include new or extended engineering services, finishes and fittings

UoR | WHITEKNIGHTS PAVILION



UoR | BIOSCIENCE LABORATORIES



UoR | LIBRARY



EDUCATION | ST EDWARD'S SCHOOL



ST EDWARD'S SCHOOL | OGSTON MUSIC SCHOOL



The development comprised of the construction of a new **OGSTON MUSIC SCHOOL** building at St Edwards School, Oxford. The new music school provides a recital room, 25 music teaching rooms, library, classrooms and recording studios. The school remained live and occupied throughout the duration of the project, therefore Feltham had to ensure noise pollution was kept to a minimum as it was during assessment periods and school hours. Building initially started with the demolition of the existing two-storey Music School and Estate offices before construction began. Works also included developing a new access road.

The **JUBILEE BOARDING HOUSE** scheme consisted of the construction of new 3-storey Boarding House, including the structure of a high-quality modern atrium. Feltham also completed all associated external works and services. The building was created using a traditional construction method and completed in accordance with the agreed programme requirements, this was vital to ensure accommodation was ready in time to accept the new students.

The new boarding house is titled as **COOPER LODGE** and accommodates 70 students, 50 boys and 20 girls of various year groups, a House Master house, Assistant House Master's flat and a Tutor's flat. The boys and girls accommodation is separated into 2 wings, within the 3 storey block.

ST EDWARD'S SCHOOL | JUBILEE BOARDING HOUSE



ST EDWARD'S SCHOOL | COOPER LODGE



EDUCATION | THE WESTGATE SCHOOL



THE WESTGATE SCHOOL | SPORTS HALL



The Westgate School is located in Cippenham, Slough. It delivers a high-quality comprehensive education for approximately 1000 young people aged between 11 and 19 years old.

Our first project consisted of the construction of a two-storey **SPORTS HALL** that incorporated changing facilities on the ground floor and classrooms above.

The next project comprised of the design and construction of two new, two storey **TEACHING BLOCKS**. Phase one included the erection of stand-alone building and phase two comprised of an extension onto the existing school building. The new structures provide additional 6th form areas, classrooms and further storage space for the school hall. Additional refurbishment and alteration work were also included to provide the design technology and science classrooms with fully equipped ancillary areas.

I am writing on a personal level to say how grateful I am for the good job you have done during the time we have worked together at The Westgate School project. The site has been run efficiently, effectively and professionally... I would also comment favourably on the constructive and friendly relationship built with the Client's members of staff. The finished building should stand as a testament to your efforts. I hope we have the opportunity to work together again in the future

THE WESTGATE SCHOOL | TEACHING BLOCKS



LITTLE HEATH SCHOOL | TILEHURST



LITTLE HEATH SCHOOL is a voluntary-aided co-educational comprehensive secondary school, located in Tilehurst, Berkshire.

Feltham design & built a 2-storey sixth form centre that offers a mix of teaching facilities, study areas and social spaces for an additional 450 pupils alongside 31 extra car parking spaces. During this project Feltham achieved BREEAM Excellence as requested by the client.

THE CASTLE SCHOOL located in Newbury cater for children with a variety of complex learning difficulties from the ages of 3 to 19 years old. This project involved constructing two classrooms plus additional break-out areas and WC provision. The school remained in full operation during the works except during school holidays.

THE CASTLE SCHOOL | NEWBURY



THE CASTLE SCHOOL | PHASE 1



THE CASTLE SCHOOL | PHASE 2



EDUCATION | ST SWITHUN'S SCHOOL



St Swithun's
WINCHESTER

ST SWITHUN'S SCHOOL | PHASE 1



ST SWITHUN'S SCHOOL is a mainstream, independently funded senior school for girls aged 11-18 years old in Winchester, Hampshire.

The project comprised of creating new build school facilities to accommodate an additional 260 pupils from Nursery, Reception and years 1 to 6. The scheme was built in two phases separated by a year's gap and the duration of the works took place within a live/occupied environment.

In addition to two classrooms per year group, specialist classrooms were constructed for the teaching of DT/ ICT/ Science/ Art/ Music/ French and the Humanities. The project also delivered a new library, music practice rooms, cloakrooms, staff room, administration offices, a music / performance hall and a gym hall. The required BREEAM accreditation of VERY GOOD was achieved throughout the project.

ST SWITHUN'S SCHOOL | PHASE 2

